



Bray Partnership  
Annual Report  
2006

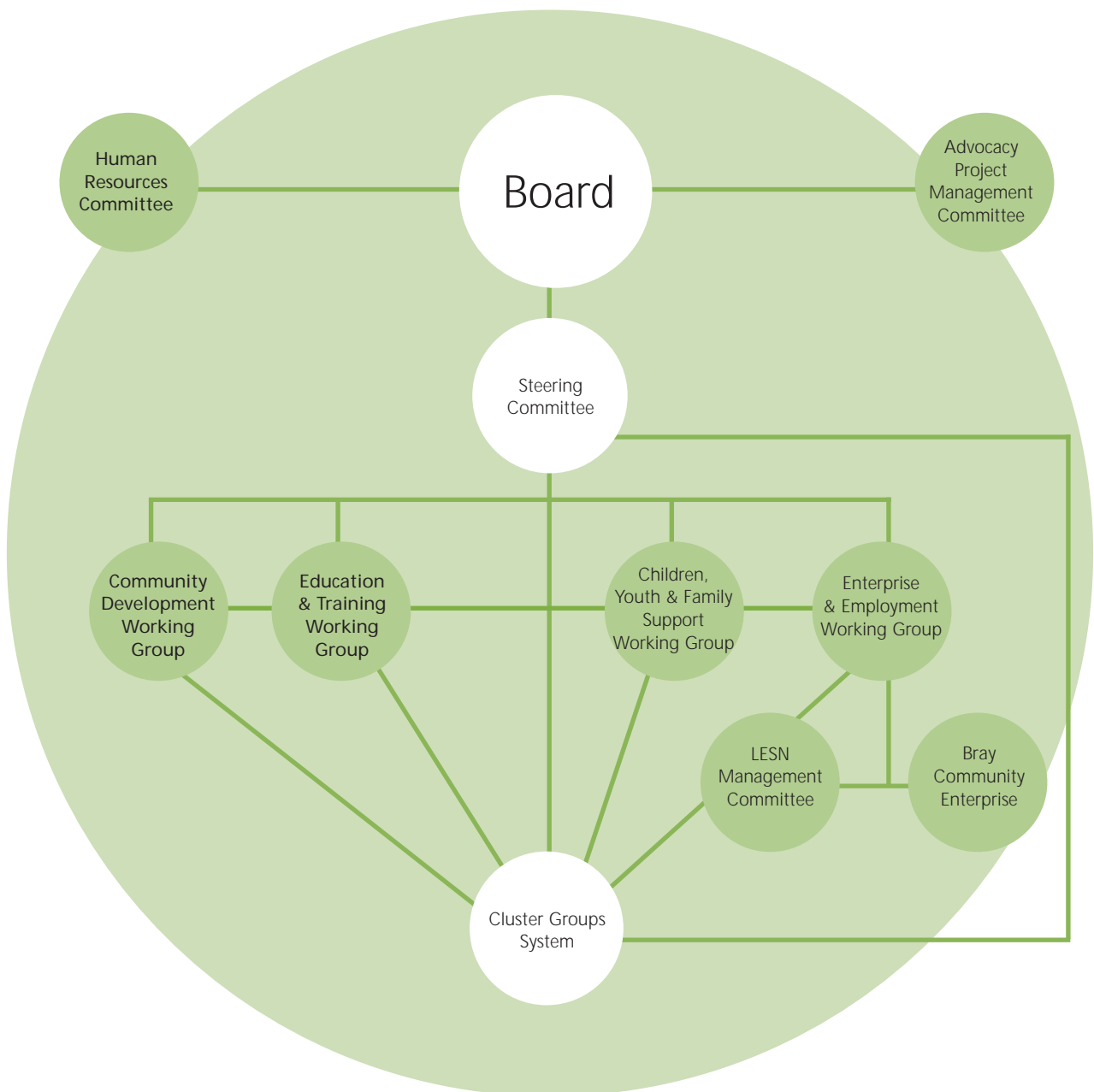
## Vision

Bray Partnership believes that the well-being of communities is best achieved through the active engagement of all to combat social disadvantage and enhance the quality of life in the area.

## Mission Statement

Bray Partnership's programme of work focuses on the need of those individuals and groups who have not had the opportunity to develop their capacities, so enabling their full participation in society. It works to encourage and facilitate community, voluntary and statutory sectors, social partners, and elected public representatives to build on existing co-operation.

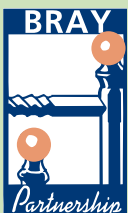
## Bray Partnership Operational Structure



# Contents

---

Foreword	2
About Bray Partnership	3
Summary of key achievements in 2006	4
Our work in 2006 :	
• Supporting people into employment Our Employment Services work in 2006	8
• Supporting people into self-employment Our Enterprise Support work in 2006	10
• Promoting equality in education Our Education, Youth and Childcare work in 2006	12
• Supporting communities Our Community Development work in 2006	14
Members of the Bray Partnership Board	16
Bray Partnership staff	17
Job Initiative staff	18
Summary of accounts	19
Looking forward	20



# Foreword

**2006 was an eventful and successful year for Bray Partnership. Over the year we supported a wide range of projects and initiatives designed to make a real difference to the lives of the people and communities we serve.**



Peter Brennan, Manager, and  
Jerry Murphy, Chairperson

Our primary support programmes continued to assist many individuals, groups and communities to meet their needs in the areas of education, employment, enterprise and community development.

We also developed, supported and funded a number of exciting new projects in 2006, working in partnership with local groups, communities and agencies. These included a new advocacy service for people with intellectual disabilities; research into the needs of older people in Bray; and a successful funding application to Pobal for a Community Services Project to support older people to stay in their homes.

These examples demonstrate our continuing commitment to working in partnership with others in the local community to ensure better joined-up action and service-provision. In 2006 we again committed significant resources to maintaining and strengthening these links - for example opening communication channels with different bodies about the provision and delivery

of local services, and establishing local consortia to set up new projects.

Another significant piece of work for the Partnership in 2006 included completing the application process for the FÁS Excellence Through People (ETP) Award - which we expect to receive in 2007. We also worked with other local development groups in Wicklow on the Government's Cohesion Process. Following this work it has been agreed that Bray Partnership will continue to operate as a local development company in the Greater Bray area.

Our funding in 2006 came from a number of sources - much of it central exchequer or statutory based - with the Local Development Social Inclusion Programme being our key single source.

Finally, we would like to acknowledge the vital input of many individuals, groups and organisations into our work in 2006, and the professionalism and expertise of our staff team in carrying out our work.

Jerry Murphy, Chairperson

Peter Brennan, Manager

# About Bray Partnership

**Bray Partnership is one of 38 local development companies in Ireland. Our mission is to tackle social exclusion and disadvantage in the Bray area, using a partnership approach.**

We do this by bringing together local community groups, statutory bodies, social partners and elected public representatives to identify local needs and issues and develop effective collaborative responses.

Each year our programme of activities resources and supports a wide range of projects and initiatives aimed at tackling the disadvantage, poverty and exclusion experienced by individuals and communities in the Bray area.

Our work is guided by our Area Action Plan, which is informed by extensive local consultation. The last plan ran from 2000-2006 and we are currently developing our new one.

Our Area Action Plan is implemented through our four support programmes. The programmes offer a wide range of supports, including funding, to individuals, groups and communities to address the issues that affect their everyday lives.

## Our Support Programmes

Community Development  
Education, Youth and Childcare  
Employment Services  
Enterprise Development

## Our Target Groups

The key target groups we work with are:

- Long-term unemployed people
- Older people
- Travellers
- People with disabilities
- Refugees and asylum seekers
- Young people at risk
- Disadvantaged women
- Disadvantaged men
- Homeless people
- Ex-offenders
- Low income households

# Summary of key achievements in 2006

**During 2006 we supported and initiated a wide range of actions and initiatives, which are listed in full later. This section highlights some of our key achievements during the year.**

## Supporting people into employment

We responded to more than 1,200 information queries, and contacted over 2,900 people through outreach, both house-to-house and at the local employment exchange.

230 job-seekers registered with our Local Employment Service. 186 people were placed in jobs and almost 150 were supported to access education, training and labour market schemes.

Over 400 employer contacts were generated over the year and almost 3,000 job matches supplied to clients.

Our Employer Links Programme provided a practical workshop for employers on how to develop a Health & Safety Statement, including Risk Assessment Procedures. This had been identified as a very practical need of local employers - especially small employers - during previous employer-focused work.

An Education and Training Progression Fund provided by Bray Local Drugs Task Force to our Local Employment Service Network had, by the end of 2006, supported 27 people to access education, training and

employment supports. Six of these have progressed into employment, with a further nine involved in education and training. Much of our work with this target group involves significant levels of co-operation with Bray Community Addiction Team.

## Supporting people into self-employment

14 people completed our Pre-Enterprise Training Programme. This intensive 22-week course gives participants the skills to assess the viability of their business idea and move towards self-employment. 11 of the people who took part in the course went on to become self-employed, eight of whom signed onto the Back to Work Enterprise Allowance.

We provided one-to-one mentoring to 95 people to help them to develop their own business through our Mentor Support Programme.

13 people completed our first Considering Self-employment Programme. This new 12-week programme introduces the option of self-employment as a viable alternative to employment for people who are unemployed.



Men at the LEAP Project taking part in HSE healthcare course

14 women completed our Women into Business Programme, a course specifically designed for women considering a return to the workplace and looking at the option of self-employment. Participants assess the skills that they have and those they need to develop to progress their business idea.

We provided Excel training for 15 self-employed clients, and nine completed training in book-keeping skills.

We provided IT training for 107 people, with funding received through the Dormant Accounts Fund. This training was offered at both beginner and improver levels and was designed to increase confidence and reduce the fear of using computers.

We provided two seminars during the year, on completing your tax returns and one-to-one selling, that were attended by 22 people.

## **Tackling educational disadvantage**

We supported 52 students from the Bray area to participate in third level education through our Bray ASSET Level Programme, funded under the Millennium Partnership Fund for Disadvantage. We supported a further 68 individuals to participate in basic and further education through our BEAP grants scheme.

We ran a workshop on developing inclusive strategies for lesbian, gay, bi-sexual and trans-gender young people in formal and informal education

settings. 20 youth workers and teachers from local projects and schools participated in the training.

We published a comprehensive information booklet for parents and students on primary and post-primary education provision in Bray. The booklet, entitled *Chalk it Down*, was distributed widely to families through local schools.

We supported a seminar on Family Learning run by the Bray Adult Education Network. The seminar was attended by local education providers, schools and parents and provided an opportunity for participants to find out more about this model of adult education and discuss how they could work together to set up such schemes in Bray.

We continued to support a homework club for young Travellers from a local secondary school, in conjunction with Bray Travellers Community Development Group. Third level students who are in receipt of our Millennium Partnership grants scheme act as tutors for the programme.

We supported a new tutoring and achievement support initiative run by the Little Bray Youth Development Project in the Little Bray Family Resource Centre. The initiative provided extra tutoring support in key subject areas to Junior Cert students from the local area.

## **Supporting communities**

We gave grants to nine community groups for activities such as arts and gardening for



Participants on our Pre-Enterprise Training Programme for non-Irish nationals

people with disabilities, childcare for a parenting programme, and research to document the reality of absolute poverty for people not in receipt of any income or social welfare payment.

We held training workshops for local groups in: Proposed Charities Legislation, Using Digital Cameras for Your Publications, and Management Committee Skills.

We successfully applied for a Pobal community services project to provide a friendly call service and simple home and garden maintenance for older people to support them to stay in their own homes.

We held consultation sessions with older people, Travellers, young people, lone parents (male and female), and homeless people as part of the consultation process for the Wicklow County Local Anti-Poverty Strategy.

Community development staff participated in the Barcelona Committee of the Wicklow County Council, which focuses on accessibility, and the steering committee of the Wicklow Community Platform.

Significant funding from Bray Partnership supported the work of the Bray Volunteer Bureau during 2006. Over the year 160 volunteers registered with the bureau and 81 groups registered 203 opportunities. About 74% of registered volunteers were placed with groups.

We continued to support the Community Administrative Support Centre, which helped at least 150 community and voluntary groups to produce programme and activity

brochures, announcements for fundraising activities, and minutes of meetings. This in turn helped groups to increase their profile in the community and participation in their activities.

We held three Community Lunches, providing a networking and information opportunity for over 200 local community and voluntary groups and agencies.

## **Collaborative work**

### **BEOIRS Traveller Women's Training Programme**

We provided funding to the BEOIRS Traveller Women's Training Programme during 2006 for course materials, tuition and networking. With 15 women engaging in BEOIRS each year, many of them young mothers, the programme has positive impacts at personal, family and intergenerational levels. Increased focus on certification over time has led to an increase in the progression options open to the women who complete the programme.

### **LEAP Project for Traveller Men**

We continued our support for the LEAP Traveller Men's Project, providing funding to employ a Co-ordinator and for project overheads. Our Employment Services staff also provided line management, outreach and facilitation supports. The project engaged with 107 Traveller men in 2006, providing a wide range of courses, including two Back to Education Initiative courses. In addition, some participants took part in research carried out to develop the Co. Wicklow Local Anti-Poverty Strategy.



Women volunteers from Sunbeam House at one of our Community Lunches

### **Traveller Employment Network Training (TENT) Project**

Working in partnership with community and statutory groups, we made a successful application under the Community Services Programme for the TENT (Traveller Employment Network Training) Project. This project aims to develop an enterprise employing Traveller men and using their traditional crafts such as tinsmithing to produce saleable goods for both the home and tourist markets.

### **Falling Through the Cracks research**

We provided funding, with the Combat Poverty Agency, to the Wicklow Trade Union Centre to conduct and publish research into the experiences of individuals not in receipt of a social welfare payment or waiting long periods for social welfare payments to be processed. This research, "*Falling Through the Cracks*", highlighted the reality of absolute poverty experienced by many people in this situation and made a series of recommendations on how some of the issues identified could be dealt with. We will be working with the Wicklow Trade Union Centre during 2007 to progress some of these recommendations.

### **Women Accessing Value-added Employment (WAVE)**

This collaborative project continued in 2006 to provide support to women from specific areas of Bray who wanted to improve their employment prospects. During the year the

project supported approximately 80 women to progress into education, training and the open labour market.

### **Bray and Greystones Community Directory**

We worked with the Bray and Greystones Directory Committee to update the *Bray and Greystones Community Directory*, a comprehensive guide to community, voluntary and statutory groups operating in the Bray and Greystones area. We also provided information on local groups for inclusion in the Bray and District Chamber of Commerce Directory, which was delivered to every home in the area.

### **Developing a human rights training module**

We worked with a group called 80:20 Educating and Acting for a Better World to develop a module on '*Introducing and Exploring Human Rights*' for use with young people and community groups.

### **Reports/publications/submissions**

'*Staying at Home in Bray*', a research project on the needs of older people in Bray, particularly the supports they need to stay living in their own home.

'Chalk It Down' information booklet for parents and students on primary and post-primary education in Bray.

Submissions to Wicklow County Council for input into their Local Anti Poverty Strategy.



Participants on one of our Active Citizenship courses

# Supporting people into employment

## Our Employment Services work in 2006

**During 2006 we provided a wide range of supports and services for people from specific target groups through our Employment Services Support Programme.**

The programme is co-ordinated and delivered by the Bray Partnership Local Employment Service Network (LESN) and provides the following services:

- Information provision to people on their rights, entitlements and training and employment options from four outreach Contact Points around Bray;
- Mediation and progression supports towards employment for long-term unemployed people and others distanced from the labour market.

GP Only Visit Card. Another goes through the steps of opening a bank account.

The need for this information was highlighted by Information Officers from our Local Employment Service Network, and other local groups we work closely with - such as Bray Money Advice and Budgeting Service, INOU, CIC, Bray Community Addiction Team and Wicklow Trade Union Centre.

Their experience on the ground showed that many people simply weren't aware that they could claim certain benefits, or how to go about claiming them.

To reach the maximum number of individuals we distributed the leaflets to individual households in selected areas, and also through local community groups and information agencies.

Of course, information on these benefits was already available at national level. However, these local leaflets go one step further by providing contact numbers for local groups and agencies who can provide one-to-one support to individuals – to see if they are entitled to claim a particular benefit, and then to go through the steps of making the application.



Did You Know information leaflets

## Case Study

### Did You Know information leaflets

During 2006 our Information Givers Network produced a series of handy local information leaflets on rights and entitlements.

Each of the leaflets, entitled "Did You Know", gives practical information relevant to the local area – all in a user-friendly format.

Leaflets in the series so far cover Family Income Supplement; Back to Work Enterprise Allowance; Job Seekers Allowance; and the

# Employment Services Support Programme Funding in 2006

Action	Group	Amount Allocated
Resourcing the Bray Partnership Local Employment Service Network (LESN)	Managed directly by Bray Partnership	€8,083 (LDSIP)* €517,579 (DETE)* via FÁS
Mediators Fund	Managed directly by Bray Partnership	€10,664 (DETE) via FÁS
Education and Training Progression Fund	Managed directly by Bray Partnership	€10,250 (BLDTF)*
Whole Time Job Initiative Programme	Managed directly by Bray Partnership	€220,089 (FÁS)
Research into Target Group Individuals in Receipt of No Income	Wicklow Trade Union Centre	€2,500 (LDSIP)
Employer Links Programme	Managed directly by Bray Partnership	€2,000 (LDSIP)

\*(LDSIP) Local Development Social Inclusion Programme

\*(DETE) Department of Enterprise, Trade and Employment

\*(BLDTF) Bray Local Drugs Task Force

Note: funding for the human resource input to the support programme is included in the figures on page 19 of this report.

# Supporting people into self-employment

## Our Enterprise Support work in 2006

**In 2006 our enterprise service, Bray Community Enterprise, provided a range of specialised supports to unemployed people from particular target groups to help them to set up their own business.**



Noel Walsh

The service offers advice on business set-up and planning, start your own business courses, training, seminars and workshops, and ongoing support once trading.

During 2006 we gave one-to-one mentoring support to 95 people, ran Start Your Own Business training courses for 49 people, IT training for 15 people, and helped 16 people to sign onto the Back to Work Enterprise Allowance.

### **Case Study**

#### **Noel Walsh: builder**

Noel was at a crossroads in his working life when he first came to us. Building jobs he had been working on had come to an end, and he found himself out of work.

He had good experience and skills as a foreman overseeing construction work and decided he would like to explore the idea of starting his own business.

Noel took part in our Considering Self-Employment course, where he learned the essentials of business planning, market research, marketing, sales, book-keeping and administration.

After this he went on to attend one of our more in-depth book-keeping courses and continued to avail of our one-to-one mentoring support in preparation for starting his own business.

With the support of the Back to Work Enterprise Allowance Scheme, Noel has realised his ambition to set up in business and is now trading successfully and moving towards his goal of financial independence.

Noel says that he "found the training and support from BCE to be invaluable" in helping him to set up his business and in particular that the book-keeping training he received "took away the fear of bookwork".

# Enterprise Development Support Programme Funding in 2006

Action	Group	Amount Allocated
Resourcing the Local Enterprise Company	Bray Community Enterprise Ltd (BCE)	€49,355 (LDSIP)*
Women into Business Training Programme	BCE	€5,000 (LDSIP)
Information and Communication Technology Training	BCE	€3,000 (LDSIP)
Seminars, Network Events Programme	BCE	€2,000 (LDSIP)
Pre-Enterprise Training Programme	BCE	€15,000 (LDSIP)
Implementing the Partnership's Information strategy	Managed Directly by Bray Partnership	€2,500 (LDSIP)
Building Local Capacity to Equality Proof Actions and Activities	Managed Directly by Bray Partnership	€2,000 (LDSIP)
Business Support to Non-Irish Nationals	BCE	€3,700 (LDSIP)
Considering Self-Employment Training Course	BCE	€3,098 (LDSIP)

\*(LDSIP) Local Development Social Inclusion Programme

Note: funding for the human resource input to the support programme is included in the figures shown on page 19 of this report. The overall operating budget available to the action may also include funding directly secured by the promoting organisation not shown here. In this regard, Bray Community Enterprise was successful in attracting over €60,000 from a number of bodies such as FÁS, the Dept. of Social and Family Affairs and the Dormant Accounts Fund to resource various initiatives in the support programme.

# Promoting equality in education

## Our Education, Youth and Childcare work in 2006

**During 2006 we continued our work to improve equality in education for young people, children and adults living in the Bray area.**

Our education strategy focuses on working closely with young people, parents, local schools, youth services, and early childhood, community and adult education providers.

In this way we can develop joint strategies and initiatives to increase the participation and achievement of socially-excluded individuals, groups and communities in education.

Examples of this work during 2006 include a new education support programme for Traveller children; training for teachers and youth workers in Lesbian, Gay, Bisexual and Transgender equality; and our grants schemes supporting socially-excluded individuals to participate in further and higher education.

A complete list of the actions and initiatives we supported through this programme in 2006 appears opposite.

### **Case study** **Managing Challenging Behaviour Training**

In 2006 we ran an innovative training programme on managing challenging behaviour for staff working with young people in local projects.

The idea for the programme came from a consultation we carried out with more than 200 young people to find out their views on education and living in Bray. Some of them reported a high level of suspensions, and general lack of engagement in formal and informal education settings, often arising from disruptive behaviour.

The training was based on the Therapeutic Crisis Intervention model. Participants learn during training how to de-escalate challenging behaviour as it arises and methods of non-physical and physical intervention.

The participants came from a range of local youth initiatives, including Little Bray Youth Development Project, St. Fergal's Youth Development Project, Ballywaltrim Community Centre, Bray Travellers Community Development Group and Bray Youth Service. The skills they have learned will help them to keep some of the most difficult to reach young people involved in their youth activities.

Building on the success of the programme, we will be providing this training in 2007 for teachers from local schools.



Participants on our Managing Challenging Behaviour training programme

# Education, Youth and Childcare Support Programme Funding in 2006

Action	Group	Amount Allocated
Bray and North Wicklow Childcare Network	Bray & North Wicklow Childcare Network	€4,000 (LDSIP)*
Women's Equality in Bray (WEB) Project	Bray Partnership and a consortium of Local organisations	€9,566 (DJELR)*
Little Bray Mentoring and Support Programme	Little Bray Family Resource Centre	€4,500 (LDSIP)
Traveller Men's (LEAP) Project	Bray Partnership and a consortium of local organisations	€37,000 (LDSIP) €26,152 (DES)*
Bray Adult Education Network	Bray Partnership and a consortium of local organisations	€1,200 (LDSIP)
Education and Training Grants (BEAP)	Managed directly by Bray Partnership	€15,000 (LDSIP)
BEOIRS Traveller Women's Project	Bray Travellers Community Development Group Ltd.	€7,000 (LDSIP)
Implementing the Partnership's Information Strategy	Managed directly by Bray Partnership	€5,000 (LDSIP)
Building Local Capacity to Equality Proof Actions & Activities	Managed directly by Bray Partnership	€4,000 (LDSIP)
Managing Challenging Behaviour Training for Local Schools	Managed directly by Bray Partnership	€5,000 (LDSIP)
Consultation with Young People (on Education and Community) (Research Project)	Managed directly by Bray Partnership	€3,500 (LDSIP)
Mentoring and Achievement Support Programme for Young Travellers	Bray Travellers Community Development Group Ltd	€8,000 (LDSIP)
Outdoor Pursuits Programme	Bray Youth Service	€12,200 (LDSIP)
Young People's Sports Initiative	Bray Emmets and Fergal Ogs GAA Clubs	€2,352 (LDSIP)
Women Accessing Value Added Employment (WAVE)	Bray Partnership and a Project consortium of local organisations	€11,869 (LDSIP) €120,250 (DJELR)
ASSET Level (Assisting students enter/stay in third level education) Programme	Managed directly by Bray Partnership	€23,130 (DES) €2,000 (LDSIP)

- \*(LDSIP) Local Development Social Inclusion Programme
- \*(DJELF) Department of Justice, Equality and Law Reform
- \*(DES) Department of Education and Science

Note: funding for the human resource input to the support programme, including LDSIP provision and financial allocations received from other sources such as the Department of Education and Science (via Co Wicklow VEC), are included in the figures shown on page 19 of this report. The overall operating budget available to the action may also include funding directly by the promoting organisation not shown here.

# Supporting communities

## Our Community Development work in 2006

### During 2006 we supported a range of local groups and communities through our Community Development Support Programme.

Our community development work is designed to support and empower disadvantaged and socially excluded people and communities to change their situations and tackle the problems they face.

Some of the ways we do this include providing one-to-one support, training, information workshops and funding for community and voluntary groups.

We also do research and policy work, and facilitate and resource local networks.

A complete list of the actions and initiatives we supported through this programme during 2006 appears on the page opposite.

#### **Case study:**

#### **Bray Advocacy Service: giving a voice to people with disabilities**

2006 saw the opening of a new advocacy service for people with intellectual disabilities in Bray Partnership's offices.

The Bray Advocacy Service was set up in response to a local need identified in research carried out by our Disability Cluster Group. It is a pilot project funded by the Citizens

Information Board and managed by a committee drawn from local voluntary, statutory and community organisations.

Advocacy is about supporting people to express their own viewpoint, participate in decision-making on issues that affect them, and get their rights and entitlements.

During 2006 our Disability Advocate worked with 29 clients - many on an ongoing basis with a number of different issues. The support offered was in a range of areas: for example to get information on local services; or to prepare themselves to negotiate for their rights and entitlements - this might involve support with understanding and writing letters, or role-playing before an important meeting. The Disability Advocate also feeds learning from the project into the development of local and national services and policy.

The success of the project's first year illustrates the positive outcomes that can be achieved with our partnership approach. In this case, we facilitated a number of different sectors to work together to identify real local needs and supported the development of a new project to meet those needs.



Disability Advocate Patty O'Malley with a client

# Community Development Support Programme Funding in 2006

Action	Group	Amount Allocated
Supporting Participation in Partnership Activities	Managed directly by Bray Partnership	€2,800 (LDSIP)
Grant Scheme for Small Scale Community Activity	Managed directly by Bray Partnership	€8,369 (LDSIP)
Older People Research Project	Managed directly by Bray Partnership	€5,000 (LDSIP)
Healthcare Education Project	Bray Cancer Support and Information Centre	€2,500 (LDSIP)
Update and Production of Community Directory	Managed directly by Bray Partnership	€750 (LDSIP) €500 (WCIC)
Operating a Community Administrative Support Centre (CASC)	(Bray) Community Administrative Support Centre	€8,000 (LDSIP)
Volunteer Bureau	Bray Volunteer Bureau	€18,500 (LDSIP)
Building Local Capacity to Equality Proof Actions and Activities	Managed directly by Bray Partnership	€2,500 (LDSIP)
Community Centre Development	Little Bray Community Centre	€2,500 (LDSIP)
Implementing the Partnership's Information Strategy	Managed directly by Bray Partnership	€2,500 (LDSIP)
Easi-Cab accessible transport service	Managed directly by Bray Community Enterprise	€4,000 (LDSIP)
Development work with specific target groups	Managed directly by Bray Partnership	€1,000 (LDSIP)
Supporting people and groups to take part in local and regional planning and decision-making	Managed directly by Bray Partnership	€5,000 (LDSIP)
Capacity-building for individual groups and networks	Managed directly by Bray Partnership	€3,000 (LDSIP)
WEB Project Women's Studies course	Managed directly by Bray Partnership	€2,000 (LDSIP)
Older People IT Programme	Managed directly by Bray Partnership	€7,450 (Dept of An Taoiseach) €180 (Other Income-Participants Income)
Disability Advocacy Project	Managed directly by Bray Partnership	€70,000 (Comhairle/Citizens Information Board)

\*(LDSIP) Local Development Social Inclusion Programme

\*(WCIN) Wicklow Citizens Information Network

Note: funding for the human resource input to the support programme, including the LDSIP provision and financial allocation received from other sources such as the HSE, are included in the figures shown on page 19 of this report. The overall operating budget available to the action may also include funding directly secured by the promotion organisation not shown here.

# Members of the Bray Partnership Board in 2006



Members of the Board in 2006

Name	Sector	Organisation	Group
Jerry Murphy	Independent		
Kevin Moriarty	Social Partner	IBEC	Ardmore Studios
Jim O'Brien	Community	Marginalised, Disadvantaged and Unemployed Cluster Group	Bray Travellers Community Development Group
Betty Murphy	Community	Disability Cluster Group	Easi-Cab Travel Club
John O'Brien	Social Partner	I.C.T.U	SIPTU
*Ray Meade (Note 1)	Statutory	Health Service Executive East Coast Area	
Gay Doolan	Statutory	Dept. of Social and Family Affairs	
Judy Coolahan	Social Partner	ICTU	Bray Council of Trade Unions
Patricia Shortt	Community	Marginalised, Disadvantaged and Unemployed Cluster Group	Wicklow Trade Union Centre
*Triona Irving (Note 2)	Statutory	Bray Town Council	
Carol Hanney	Statutory	County Wicklow VEC	
Liz O'Grady	Community	Older People's Cluster Group	Tuesday Tea Club
*Anne Egan (Note 3)	Elected Public Representative	Bray Town Council	
John Brady	Elected Public Representative	Bray Town Council	
Deirdre De Burca	Elected Public Representative	Wicklow County Council	
Nuala Kelly	Pobal		
Eugene Finnegan	Social Partner	IBEC	Bray Chamber of Commerce
Oliver O'Farrell	Community	Local & Community Development Cluster Group	Bray Emmets GAA Club
*Michael Mulvaney (Note 4)	Statutory	FÁS	

\*Note 1: Resigned in 2006 and replaced by Ian Daly

\*Note 2: Resigned in 2006 and replaced by Hannah O'Byrne

\*Note 3: Resigned in 2006 and replaced by Caroline Burrell

\*Note 4: Resigned in 2006 and replaced by Stephen Fitzgerald

# Bray Partnership staff 2006

## Manager

---

Peter Brennan

## Administration Team

---

Donna White	Administrator
Jennifer Jones	Clerical Officer
Ciara Mooney	Assistant Administrator
Amanda Douglas	Receptionist (part-time)

## Enterprise Support Team

---

Eithne Gunning	Enterprise Co-ordinator
Bernard Dromey	Enterprise Development Officer

## Bray Community Enterprise – Company Directly Related to the Programme

---

Séamus Storan	Enterprise Support Officer (left March 2006)
Eleanor Bryan	Administrator

## Community Development Team

---

Eileen Byrnes	Community Links Worker
Michelle Rogers	Communications Officer
Paivikki Hoolan	Policy Development Officer (Maternity Leave June 2006)
Patty O'Malley	Disability Advocate (started April 2006)
Aisling Maher	Policy Development Officer (Maternity cover June 2006)

## Education/Childcare Team

---

Jennifer D'Arcy	Education Co-ordinator
Lorna Lafferty	Childcare Policy and Development Worker

## Employment Services Support Programme Team

---

Mary O'Carolan	Employment Services Co-ordinator
Sandra Jennings	LESN Administrator
Chris Brady	LESN Employer Liaison Officer
Maura Foskin	LESN Mediator
David Walsh	LESN Mediator
Jackie Briggs	LESN Information Officer (started March 2006)
Cathy Heffernan	LESN Mediator
Fran Berry	LESN Information Officer
Susan McGrane	Clerical Officer

## Initiatives Related to the Programme

---

Pauline Long	Co-ordinator, LEAP Project
Kate Whalley	Co-ordinator, WEB/WAVE Project (Maternity Leave November 2006)
Ros Bremner	Development Worker, WEB/WAVE Project
Sighle Toibin	Co-ordinator, WAVE Project (Maternity cover November 2006)

# Job Initiative staff in 2006

Name	Group
Brian Geelon	Bray Partnership *
George Harding	Ballywaltrim Sports Facility
Mary Pearse	Bray Partnership
Ann Booth	Community Administrative Support Centre
Martin Curley	Five Loaves
Andrew O'Rourke	Holy Redeemer Parish
Brendan Earls	Little Bray Family Resource Centre
Marie Greene	Little Bray Family Resource Centre
June Murphy	Little Bray Family Resource Centre
Philomena Gummersbach	Open Door Day Care Centre
John Keating	St. Peters Parish
Davnat O'Reilly	Signal Arts Centre
Eleanor Phillips	Signal Arts Centre *
Cormac McKenna	Wicklow Trade Union Centre

---

\* Left during 2006

# Extract from Financial Statements for the Year Ended 31st December 2006

## Supplementary Information not forming part of the Financial Statements

### Operating Statement for Year Ended 31st December 2006

A number of organisations provide funding for the Partnership's annual work plan. In addition to the Local Development Social Inclusion Programme (LDSIP) Fund, we receive significant financial support for different initiatives from bodies such as: the Departments of: Enterprise, Trade & Employment; Education & Science; Justice, Equality & Law Reform; and Social & Family Affairs; FÁS; Co. Wicklow VEC; the HSE; and Comhairle/Citizens Information Board.

	12 M/E 31/12/06 €	€ 12 M/E 31/12/05 €
<b>Income</b>		
FÁS grants	765,749	770,251
Dept. of Education and Science	26,152	21,039
Dept. of Justice, Equality and Law Reform	9,566	81,096
Health Service Executive	131,050	59,275
Comhairle	70,000	21,000
Receipts from Pobal	938,126	1,056,156
Miscellaneous Receipts	<u>121,600</u>	<u>92,523</u>
	<b>2,062,243</b>	2,101,340
<b>Less Pobal Social Inclusion Expenditure</b>		
Administration	296,656	268,447
Services to the Unemployed	176,806	164,923
Community Based Youth Initiatives	44,052	43,555
Community Development	68,419	85,074
Support Costs/Performance Monitoring	<u>338,221</u>	<u>307,000</u>
	<b>924,154</b>	868,999
<b>Less Other Expenditure</b>		
Wages/Administration/Support Costs	944,444	979,957
Depreciation	7,416	13,036
LESN Mediator Fund Expenditure	10,558	13,727
Millennium Fund Expenditure	26,001	21,241
Women's Equality in Bray Expenditure	11,197	180,948
Bray Women Accessing Value Added Employment Expenditure	<u>115,767</u>	<u>19,177</u>
	<b>1,115,383</b>	1,228,086
<b>Net Surplus/(Deficit)</b>	<b><u>22,706</u></b>	<u>4,255</u>

# Looking forward

**2007 promises to be an exciting year for Bray Partnership. As well as continuing to develop existing and new projects, we will also be carrying out a review of our work in recent years, and developing a new Area Action Plan to take us into the future.**

The new plan will set out our strategy and objectives for the coming years. We will be undertaking a number of significant pieces of work in 2007 to feed into this process: such as area profiling, identifying and analysing local needs, local consultation, assessing resources and reviewing our operational structures.

While the final shape of the plan will also be influenced by programmes such as the National Development Plan, we expect that our existing support programmes will continue to be key components – these are education and training; employment; enterprise; and community development.

The development of new projects, designed to meet local needs, is an ongoing focus of our work. During 2007, we will be submitting proposals for support under the Community Services Programme for two

progressive new initiatives: a business venture employing Traveller men and a home services project to support older people to stay in their homes.

Bray Partnership is committed to quality and continuous improvement in our service delivery. As part of this commitment we will be investing considerable resources during 2007 into applying for and attaining the Q-Mark award.

Working in partnership with all of the different sectors in the local community has always been central to our collaborative approach. We will continue in 2007 to strengthen these links with the aim of ensuring more coherent and effective local actions that will make a real difference.

Finally, in the coming year we will continue to avail of the expert advice and guidance provided by Pobal in the development of our work plan.

**Bray Partnership Ltd**

4 Prince of Wales Terrace  
Quinsboro Road, Bray  
Co. Wicklow

Tel: 01 2868266

Email: [info@braypartnership.ie](mailto:info@braypartnership.ie)

